

SANSKAR SCHOOL
GRADE-V
Assignment 18
Date: Monday, 25th May 2020

ENGLISH:

Read pages 14 and 15 of Unit 2 “**Ivan’s Story**”. Select any ten words which you find difficult from these two pages. Write them in your notebook and learn their spellings. Write and learn the meanings of the following words from the story:

Amplify, cramped, crate, swarmed, approved, stationary

Do exercise A (page 15)

HINDI:

SA का कार्य पूरा करिए तथा पाठ्य पुस्तक में पृष्ठ संख्या 38-41 पर प्रदत्त सर्वनाम पढ़िए ।

MATHS:

Watch the video below and answer the questions in the practice note book

<https://www.youtube.com/watch?v=hIVmO01LCRk>

SIMPLIFICATION

Q1) $16 \times 8 \div 4$

Q2) $23 - 8 \times 2$

Q3) $60 - 48 \div 6 \times 4 + 8$

Q4) $32 \div 8 + 4 \times 6 - 2$

Q5) $56 - 36 \div 4 \times 2 + 7$

Q6) $100 - 56 \div 7 + 15 \times 2$

UOI:

Promoting Personal Inquiry

Personal Inquiry engages students in a deep and authentic learning experience that builds academic skills, fosters reflection and can inspire action. Student's planning and carrying out personal inquiry need support of parents and teachers in the form of –

- Exploring ideas
- Creating environment for deeper understanding
- Setting goals and timeline
- Suggesting and providing resources
- Sharing their personal inquiry with the family and friends
- Celebrating their learning at every step

Task - Thinking about my personal inquiry

- Think about the world around you and choose any one topic or situation that you want to know more about.
- Write the questions that come to your mind when you think about your chosen topic or situation.(Provocative questions)
- Write what you already know about your chosen topic or situation. (Prior knowledge)
- Mention the resources you will use to carry forward your inquiry.

GK:

Do the given topics in your book:-

- 1) Identify animals
- 2) All about animals

1 Identify Animals

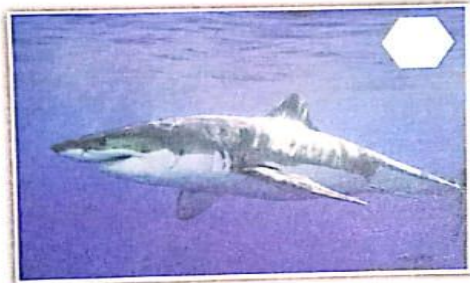
Read the given statements and identify the animals depicted in each of them.



Leopard

1 Each of its body parts is adapted for speed. Its heart, lungs and liver are extra large to cope with the animal's need for maximum air intake and energy.

2 This animal gets its name from its grizzled coat. Its bulky body enables it to survive in cold winters.



Great White Shark

3 This animal attacks and eats anything from small beetles to large grazing mammals. It can live without water for long periods, meeting all its needs from prey alone.

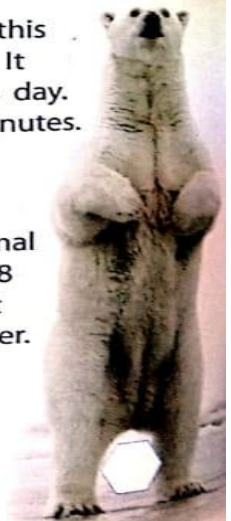
4 The tallest of all living animals, this animal can run up to 56 kmph. It can eat up to 34 kg of leaves a day. It sleeps deeply only for five minutes.



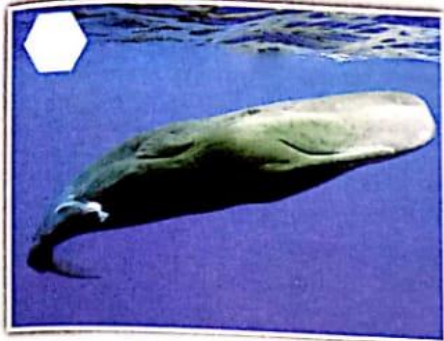
Grey Wolf

5 It is the largest wild member of the dog family. It is a social animal and lives in the family packs of 8 to 20 members. Its thick fur coat helps it to survive in cold weather.

6 It eats mainly seals and sea lions. It has the strongest bite. Its jaws can bite down with a force equivalent to the weight of four elephants per tooth.



Polar Bear



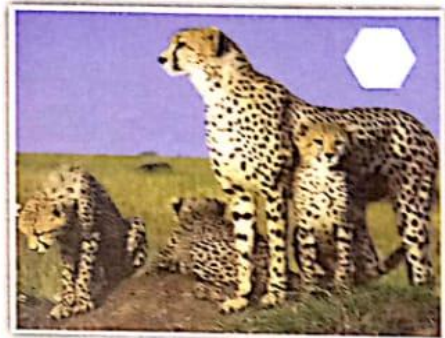
Blue Whale

7 It is the largest meat-eating animal that lives on land. Its thick and waterproof fur coat keeps it warm and enables it to swim for hours in freezing Arctic seas. It can swim more than 100 km after a little rest.



Grizzly Bear

8 This is the biggest animal ever known. Its calls are louder than a jet engine. It communicates by grunts and moans. Its call can reach up to 188 decibels, which makes it the largest and loudest animal of the Earth.



Cheetah

FUNNY FACT

A platypus can store 600 earthworms in its cheek-pouch for food.

NOW FIND OUT

Name the fox which is also known as **White Fox**, **Polar Fox** or **Snow Fox**.

Did You Know?

If you keep a goldfish in a dark room, it will become pale.



Giraffe

2 All about Animals

A large number of animal species are found on the Earth. They include insects, fish, birds, reptiles, amphibians and mammals such as the humans.

Mammals are animals with hair or fur. This often helps them to keep their body warm. Mammals often give birth to several young ones. Young mammals are fed with milk produced by their mother's body.

Marsupials are mammals that have a pouch where their young ones grow. Baby marsupials are born very small and crawl straight into their mother's pouch soon after they are born.



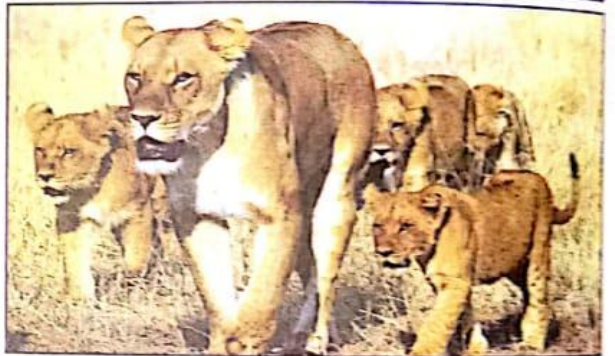
Marsupials

Did You Know?

Bats are the only mammals that can fly. Their wings are folds of skin, stretched over long and thin fingers.

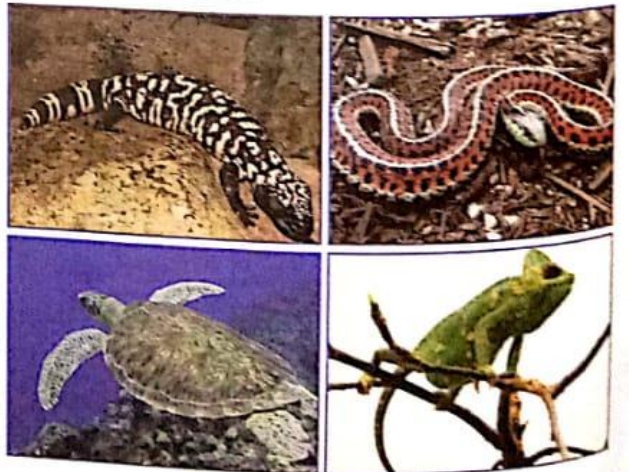


6



Mammals

Reptiles are cold-blooded animals. It means that they cannot keep their bodies warm in cold weather. They need lots of sunshine to keep themselves warm, so most of the reptiles are found in hot countries.



Reptiles

WOW!

A slim and lightweight body helps the cheetah reach 64 kmph in seconds.



Amphibian

An **amphibian** is an animal that lives both in water and on land. Amphibians lay their eggs in water, mostly in a pond or stream. They cannot live in saltwater, so these are not found in the sea.

Crustaceans have a tough, crusty covering or case. They have to shed this as they grow bigger. Many crustaceans have long antennae to help them find their way around.



Crustaceans

Molluscs are animals with soft bodies. Most of them are protected by a hard shell. Those with shells have either one shell or two shells joined together. Land molluscs are covered with slime (soft moist clay) to keep their bodies moist.



Molluscs

FUNNY FACT

An **octopus** has a beak similar to a parrot.

NOW FIND OUT

Animals that are included in the cuisine of seafood.

1. _____
2. _____
3. _____
4. _____

Earthworms are strange looking animals. They do not have eyes, ears or legs. They spend their lives tunnelling under the ground. At night, earthworms come up to look for dead leaves.



Earthworm

MUSIC:

Listen to the song on Mother Earth and sing along with it.

<https://www.youtube.com/watch?v=ohX0-q6noGY&feature=youtu.be>

<https://www.youtube.com/watch?v=RMbbxXM82oQ&feature=youtu.be>